

CERIAS

National Plant Diagnostic Network

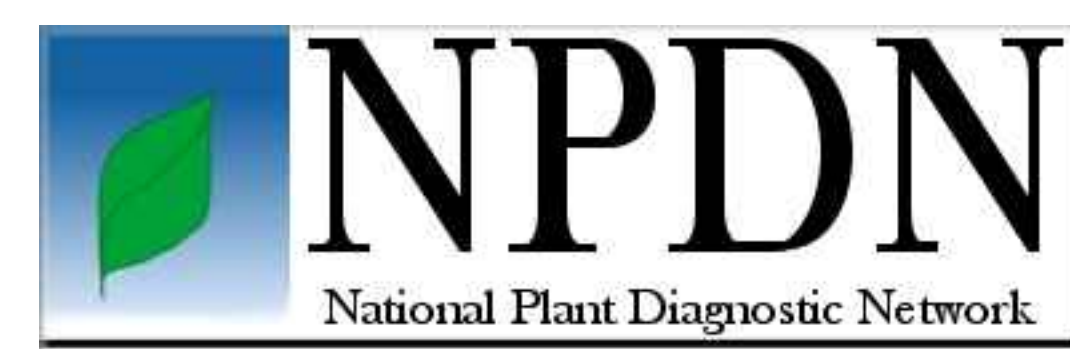
Agricultural Bio-terrorism Protection Act

On June 12, 2002, the President signed into law the Agricultural Bio-terrorism Protection Act of 2002.

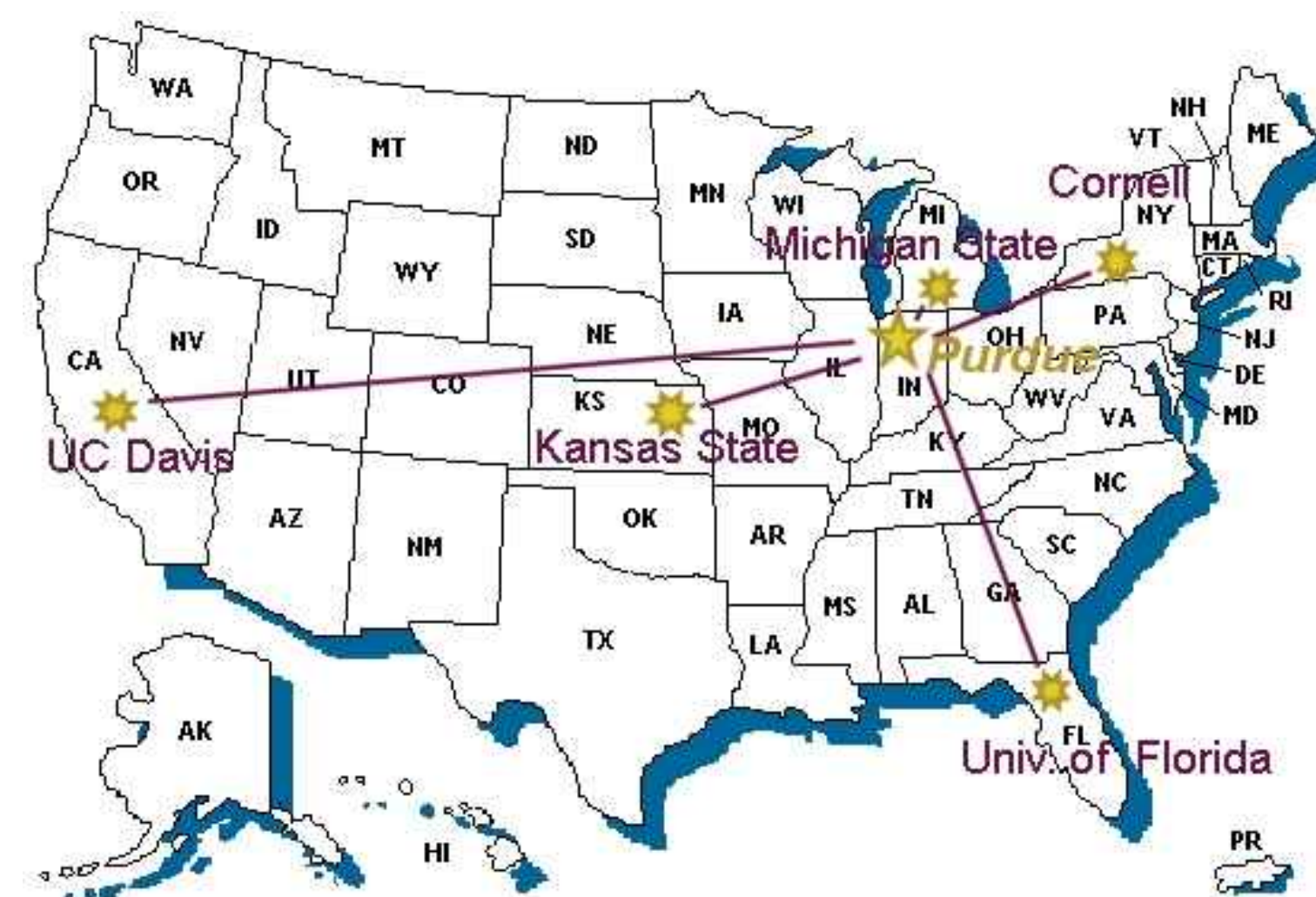
It authorized the development of a network linking plant and animal disease diagnostic facilities across the country.

NPDN focuses on plant diseases and pests.

Its mission: to enhance national agricultural security by quickly detecting introduced pests and pathogens through a network of public agricultural institutions with a cohesive, distributed system that provides a means of rapid identification, and through establishment of protocols for immediate reporting to appropriate responders and decision makers.



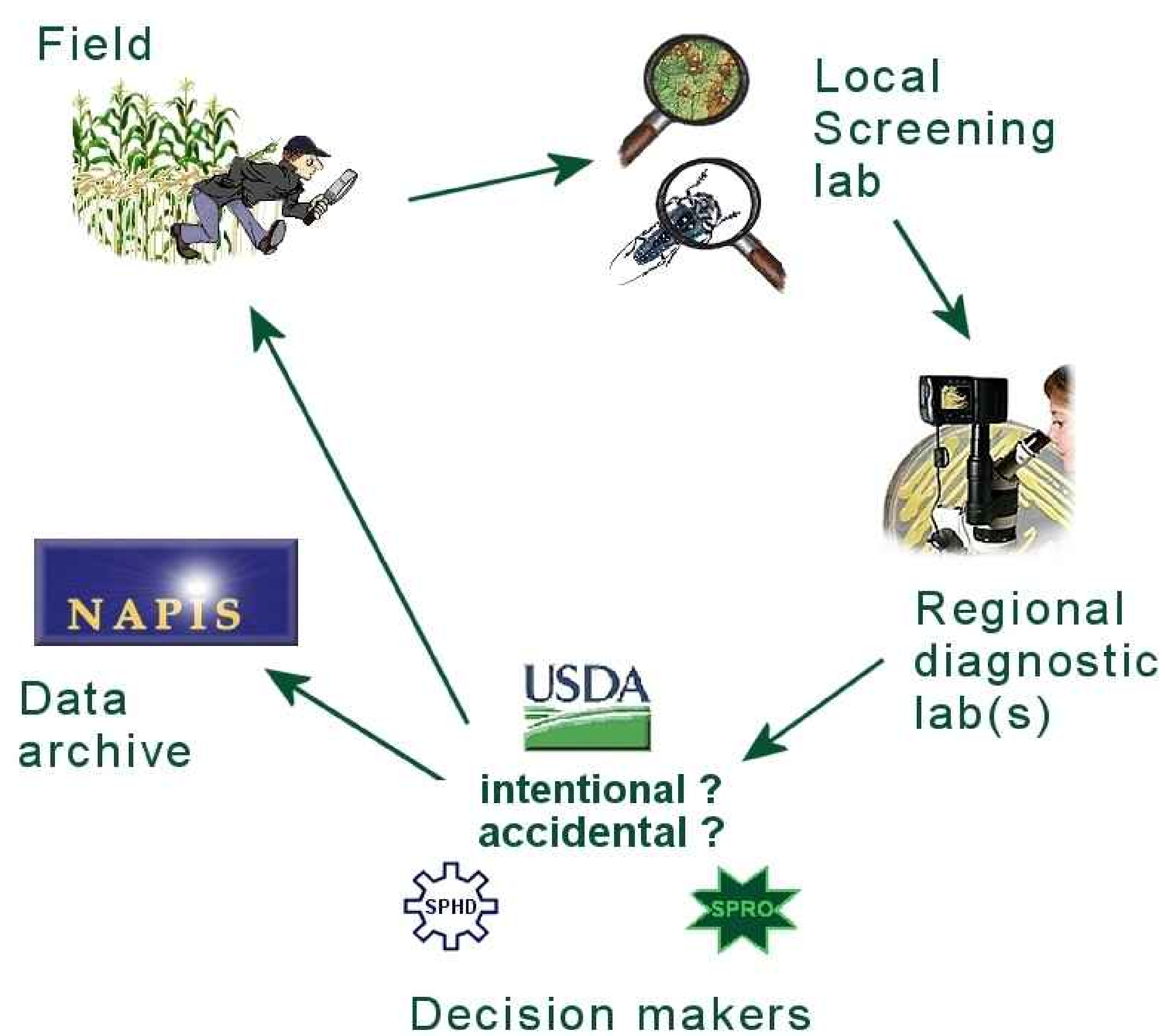
NAPIS



- ◆ nationwide field observation
- ◆ local screening labs
- ◆ regional diagnostic labs
- ◆ state, federal officials
- ◆ archival database

The network assures that participating Land Grant University diagnostic facilities are alerted to possible outbreaks or introductions, and are technologically equipped to detect rapidly and identify quickly plant pests and pathogens.

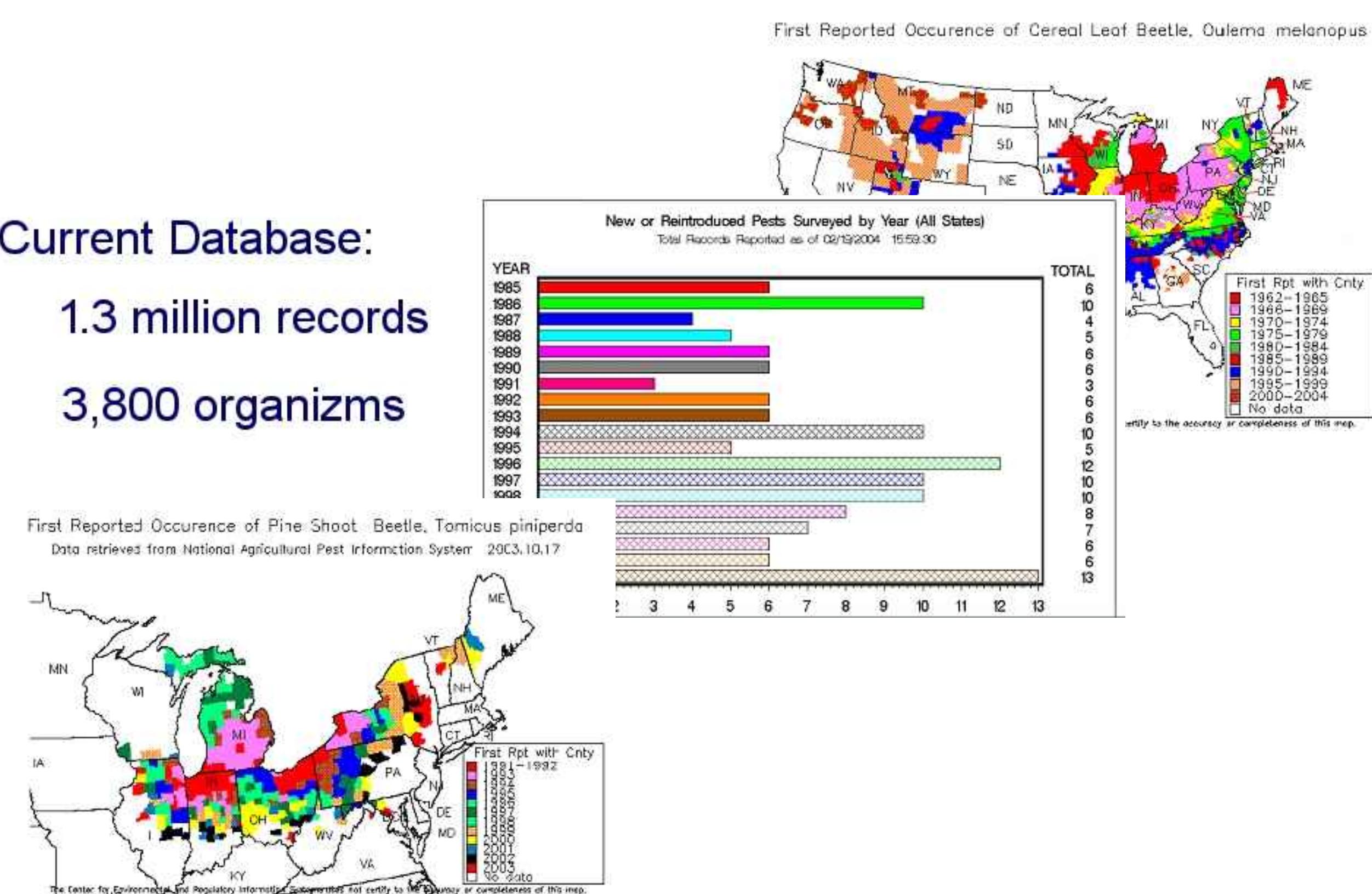
Diagnostic Data Flow



Current Database:

1.3 million records

3,800 organisms



The NPDN national database at Purdue University will provide summary reports, distribution maps, pattern analysis, and data sets for use in other studies.

Monitoring National Data in Real Time

