

# CERIAS

The Center for Education and Research in Information Assurance and Security

## Analyze Visual Data from Worldwide Network Cameras (Continuous Analysis of Many CAMeras, CAM<sup>2</sup>), NSFACI-1535108 PI: Yung-Hsiang Lu, [yunglu@purdue.edu](mailto:yunglu@purdue.edu)

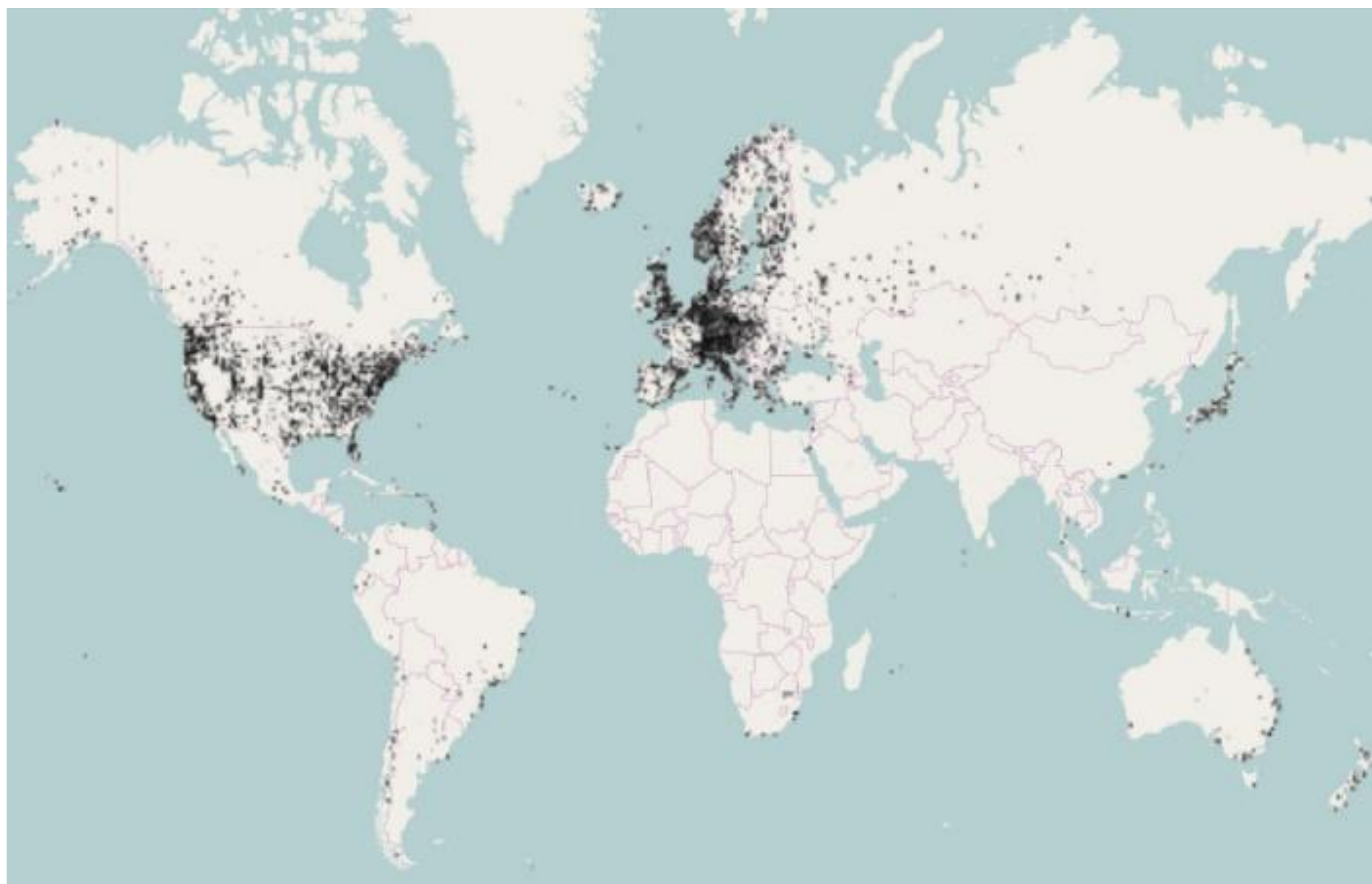
Visit: <https://cam2.ecn.purdue.edu>

### Project Status

- Cloud-based platform for process visual data from many distributed cameras
- Provide real-time data (image or video)
- 300 registered users from 21 countries
- Project currently being expanded for opensource development.

### Data from Network Cameras

- More than 200 million network cameras deployed worldwide (IHS Markit) and stream visual data continuously
- CAM2 currently has more than 110,000 cameras in national parks, street intersections, construction sites, tourist attractions ...



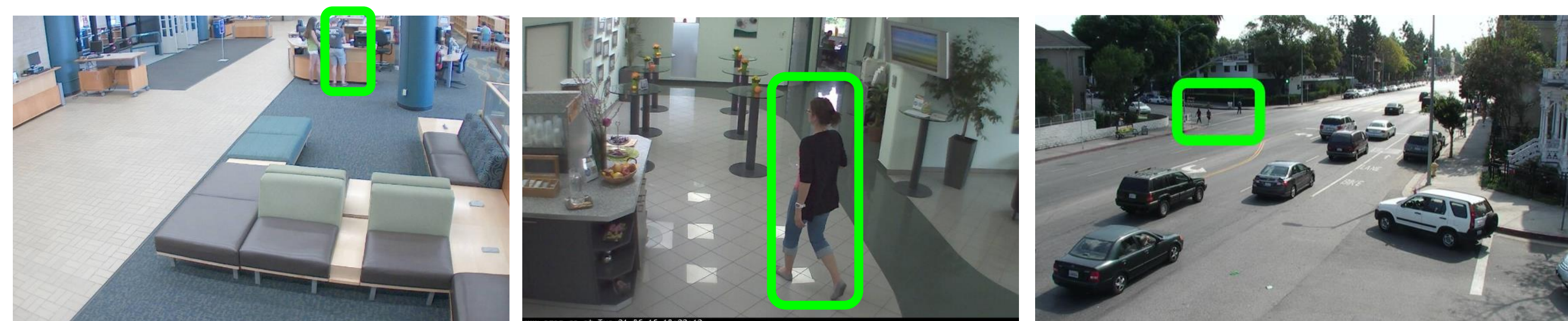
### Media Coverage



### Sample Images



### Human Detection



### Publications

CloudCom, Electronic Imaging, IEEE Homeland Security, GlobalSIP, Cloud Computing and Big Data, Multimedia Big Data, ACM Multimedia, IEEE Cloud Computing, IEEE DSP, IASSIST

### Technology Transfer



### Research Topics

- Data Management
- Resource Management
- Data Analysis