



CERIAS

the center for education and research in information assurance and security

Risk Assessment Applied A Living Lab Project

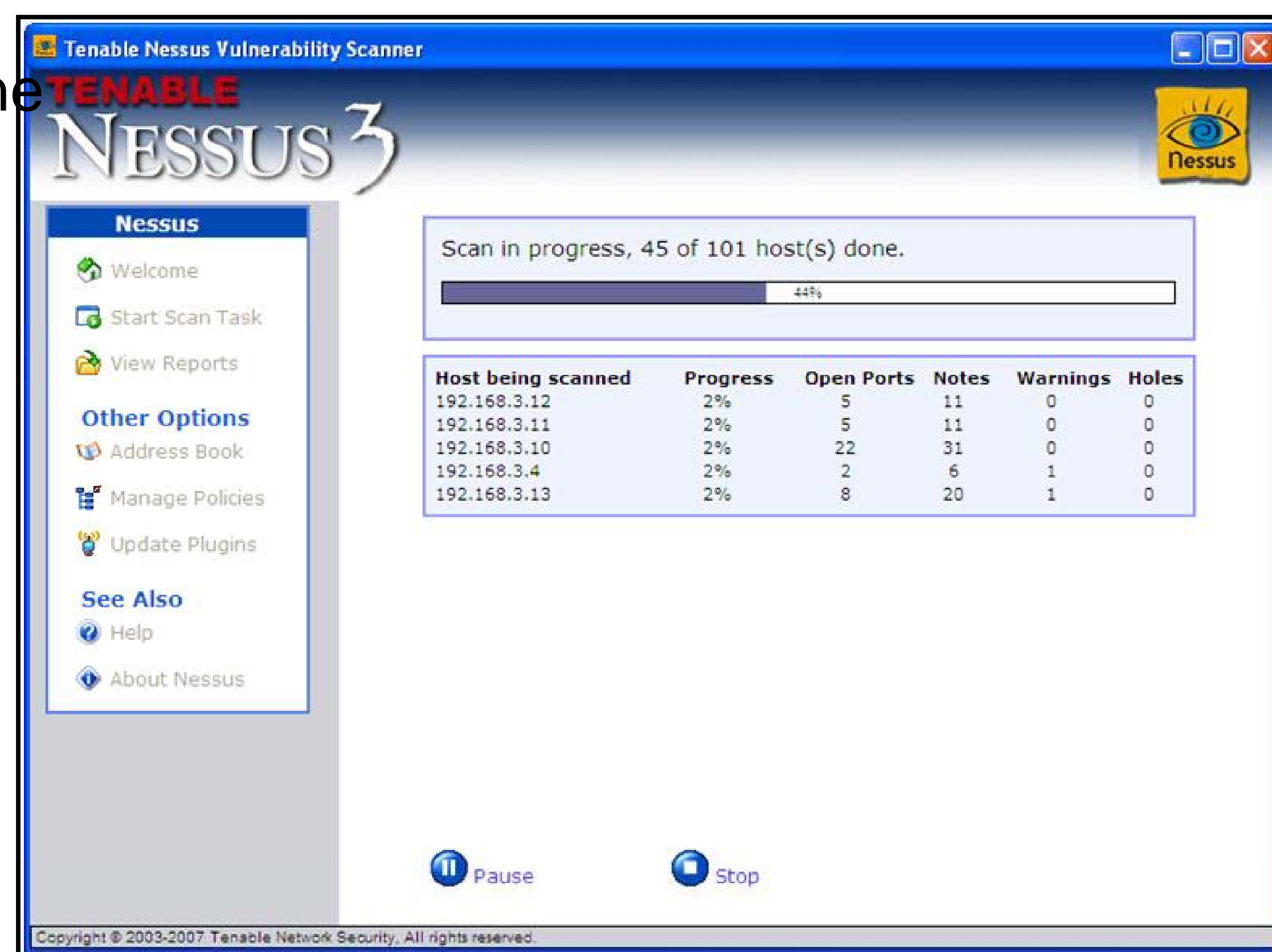
Lindsay Friddle | John Wikman, Purdue School of Engineering and Technology, IUPUI
Mentor: Connie Justice, Purdue School of Engineering and Technology, IUPUI

WHAT

- Risk assessment is the first step in risk management, a structured approach to risk mitigation
- Strategies
 - Transfer the risk
 - Avoid the risk
 - Reduce negative impact of risk-events
 - Accepting consequences of risk
- Applied to a computer network, risk assessment entails the building of a network map, including a list of all resources attached to the network
- From that map, risks (such as open ports, gaps in the firewall, etc.) can be found and managed

WHY

- Accurate risk-assessment is first step toward safeguarding the network
- Also provides current machine inventory
 - OS version
 - Patch levels
 - Software
 - Open ports by machine
 - Running services



HOW

- Use dedicated assessment machine (usually laptop for portability)
- Software tools
 - GFI Languard
 - Nessus
 - iInventory
- All scans are safe-scans--no vulnerabilities are exploited

WHEN

- Each company should develop a policy
 - Time-based (i.e. once per year, every six months, etc.)
 - Event-based (i.e. adding new server, add new desktop machine)

